

Moving Heavy Objects:

Much of building is moving things around – rearranging – to rearrange easily then is efficient building.

Moving big beams, timbers, logs.

Square or rectangular.

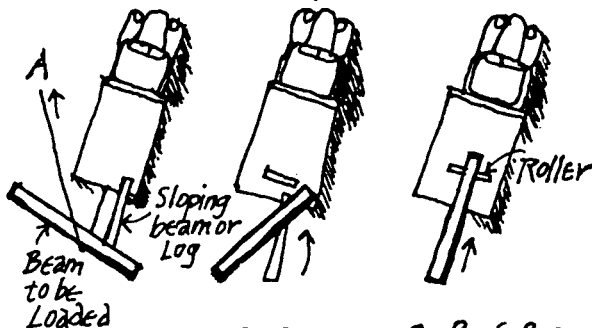
1. – Jack up one end. Scissors jack, hydraulic jack, walking beam.
– Lever up one end.
– Block & tackle & A-frame or tripod.
2. – Insert rollers (section of trees, poles, old propane tanks, lengths of pipe), one as close to middle of beam as possible, and one at end in direction beam is to be moved. Rollers can be angled to change direction, or beam can be pivoted on center roller.
– Beam then dragged, pushed or levered along on rollers.

Round beams.

1. – Round beams themselves can be rolled, or moved as above – roll onto a center pivot to change direction.

Loading or unloading from or onto a truck.

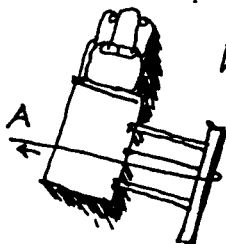
1. – Bring beam up to back of truck about 90° to the truck. Roll or slide one end up a sloping log onto bed of truck.
2. – Pivot beam 45° .
3. – Insert rollers (piece of pipe), push beam forward.



1. Beam 90° to truck
2. Beam 45° to truck
3. Push Beam on truck.

A single turn of rope going under and coming out on top – fastened to truck (see A above) rolls Log with 2:1 mechanical advantage.

4. – Bring beam or tree parallel with side of truck – roll or slide up ramps on side with rope.



When working with heavy objects, think about Levers. Rollers, pivots at center of gravity.

Heavy irregular objects (motors, generators, etc.)

1. – Put on a platform, or big plank, roll along, as above.
2. – Use chain hoist or block & tackle or tripod or big tree limb with supports to lift onto truck.